



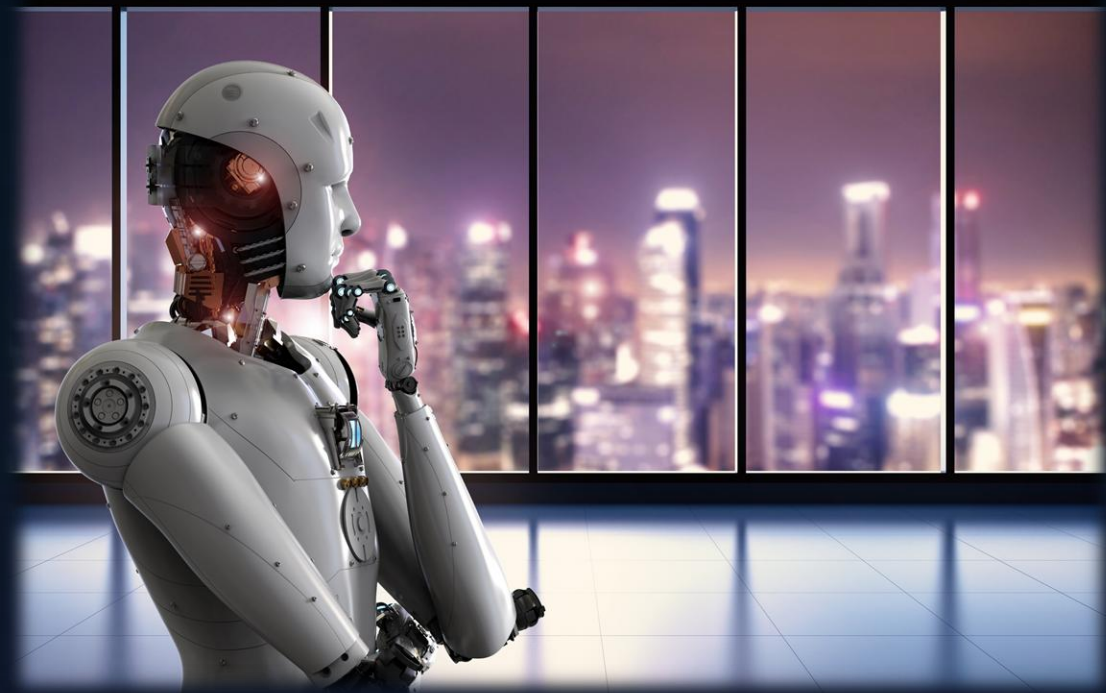
Empowering Industries with All Intelligence

Libiao Wang

Vice President, Enterprise Sales Dept, Huawei

Advancing Industrial
ALL INTELLIGENCE



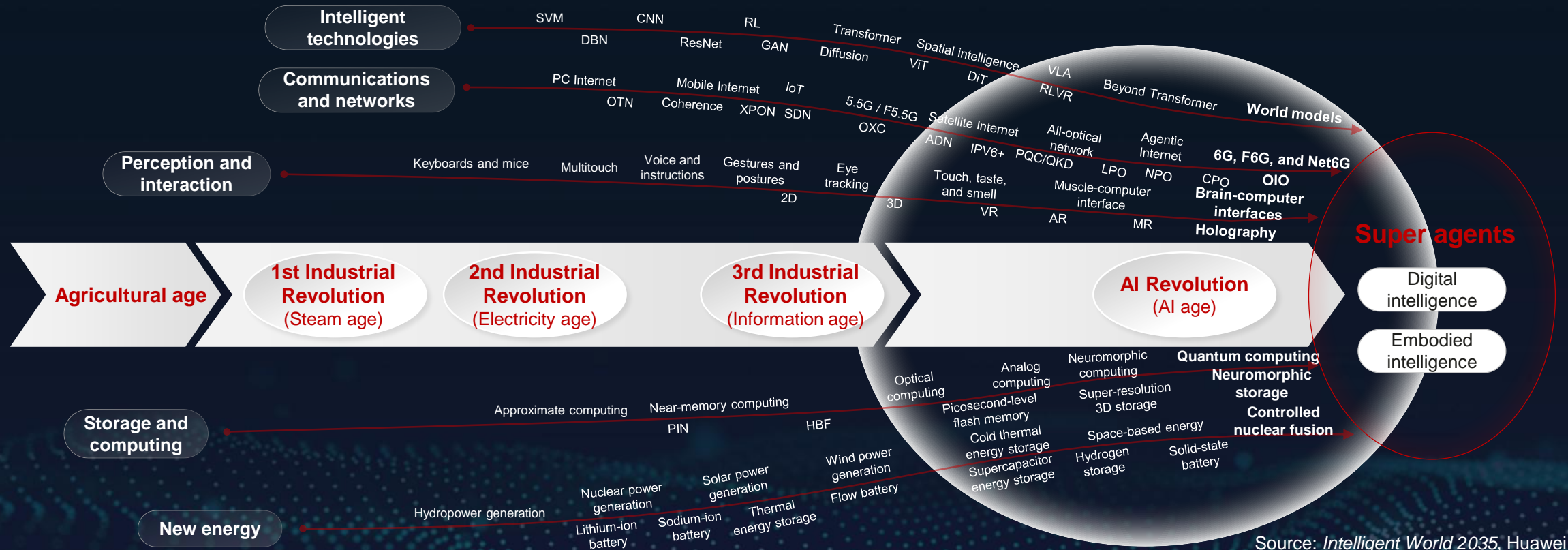


Part 1: Trends of industrial intelligence

Part 2: Practices and outlook of industrial intelligence

We are fast approaching the new intelligent world of 2035

We are expected to see critical breakthroughs in five major tech domains between 2035 and 2040. These technologies will deeply converge and create an inflection point. This convergence will blend the physical and digital worlds and lead us to an age of All Intelligence. Embodied intelligence will emerge as a key technology as a result of this fusion and affect us in a way far beyond our predictions.



Source: Intelligent World 2035, Huawei



10 megatrends in the next decade: Underpinning the fusion of the physical and digital worlds and laying the basis for human-machine symbiosis

10 megatrends

The key to achieving AGI is going physical

- Going physical: The essential path to AGI
- AI agents: Driving an industrial revolution as both tools and decision-making partners
- Embodied AI: Bridging gaps to create trillion-dollar industries

Human-machine collaboration and symbiosis

- Human-AI programming: Reshaping the future of software
- Dimensional evolution of AI in the mirror world: Enabling new interactions and immersive experiences
- The mobile Internet: From standalone apps to multi-agent collaboration

New paradigms for AI infrastructure

- Beyond von Neumann architecture: Rethinking computing to meet endless demand
- Data as intelligence: Paradigm shifts in storage with agentic AI
- Agentic Internet: A proxy for intelligent interaction between the physical and digital realms
- Energy tokenization: An intelligent energy nervous system

Accelerating fusion of the physical and digital worlds Perception, connectivity, decision, and action



The next decade: An age of human-machine symbiosis

Individuals and homes

Human-machine symbiosis: AI safety for a better life



Enterprises

Mutual trust between humans and machines and autonomous collaboration: Faster intelligent transformation of industries



Cities

AI systems: Self-adaptive and deeply embedded into the fabric of cities



Finance: AI will transform finance to provide every user with hyper-personalized services and create a new competitive edge

The last decade: Each app is a unified portal



Omnichannel collaboration for mobile banking

Focus on some high-value users

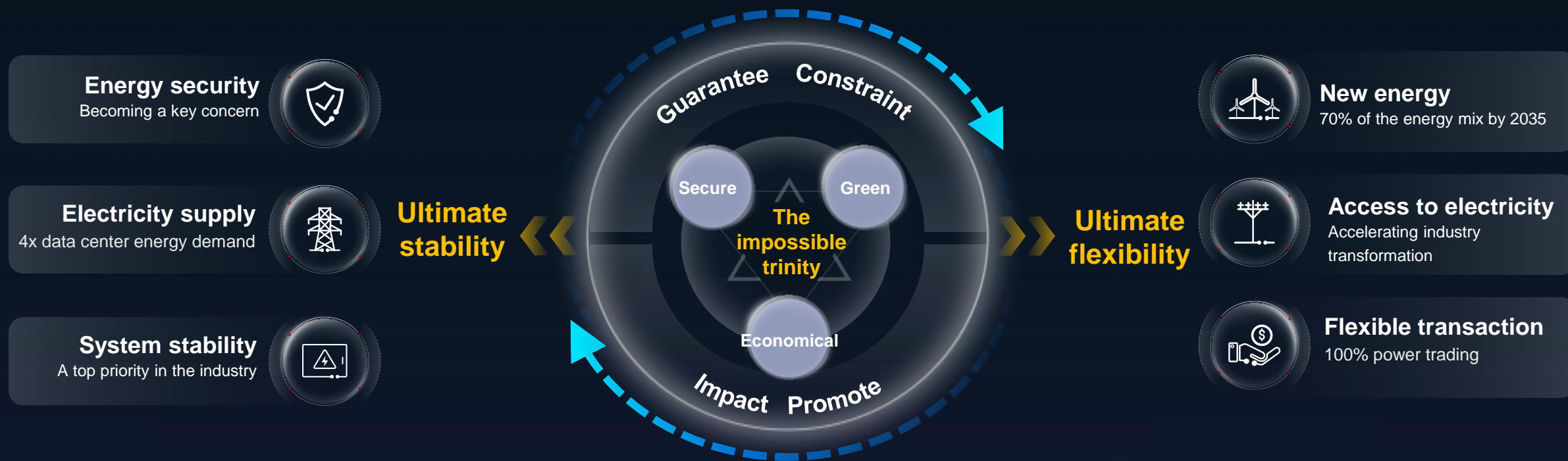
The next decade: An AI super assistant is a unified portal



Bot-to-bot (B2B) era

A user will only need to interact with the AI assistant, which then directly collaborates with other assistants and automatically completes B2B interaction.

Electricity: The future of AI is energy, and the future of energy is AI



AI's key role: Striking a balance between ultimate stability and ultimate flexibility

Manufacturing: Design for manufacturing, intelligent manufacturing, and manufacturing as a service

Design for manufacturing

Collaboration between manufacturing and R&D, process optimization, and data-driven approaches: Lower costs, higher quality, and faster go-to-market

3D printing workshops
Hyper-integrated molding



90%+ of physical trial production tasks replaced by virtual simulations
70% lower trial production costs
Product performance: ↑30%–50%

Intelligent manufacturing

AI-powered equipment and embodied AI for large-scale, customized, and flexible production

Ultra-fast flexible manufacturing

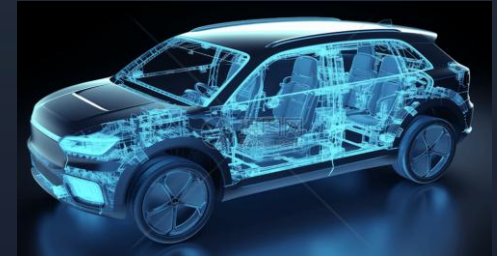


Production line adaptation to personalized orders
in minutes
Production efficiency: ↑5x–10x

Manufacturing as a service

Enhanced customer involvement through redefined interaction and information transparency

Customer involvement in all aspects of product customization



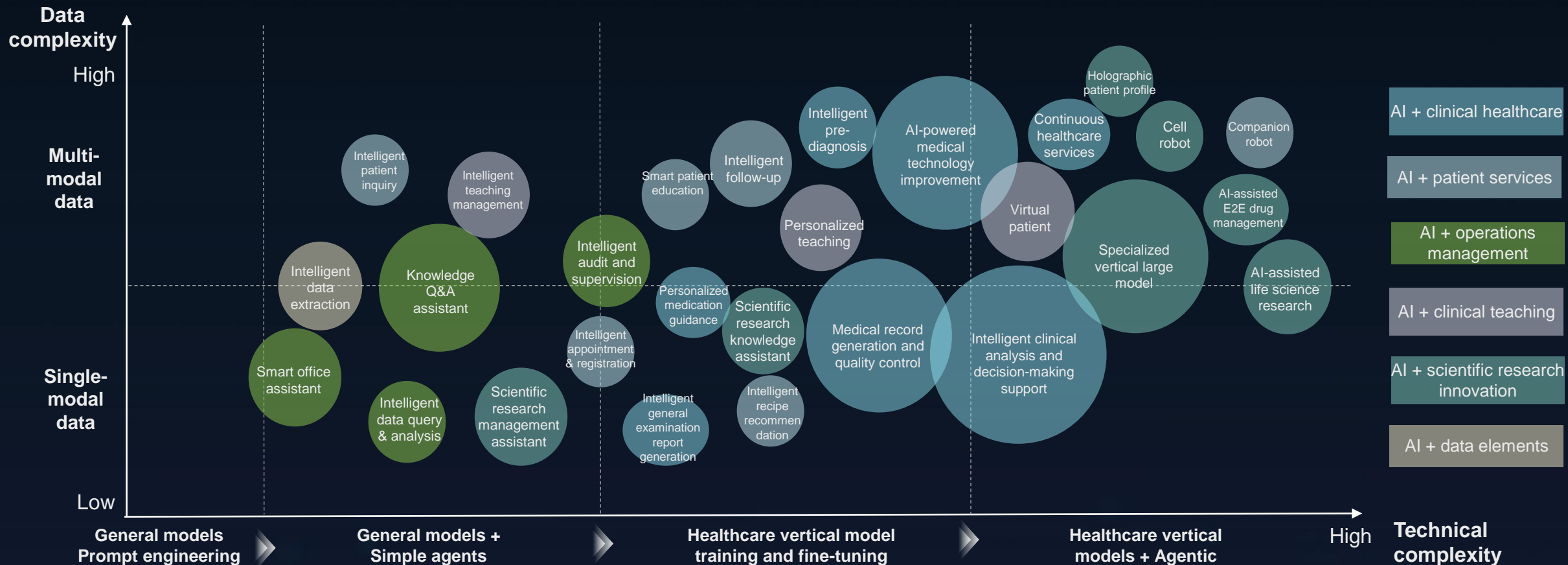
Respond to customer requests in seconds
Intelligently schedule production in minutes
Generate delivery time with hour-level precision

Snapshots
of the future

Example: First-time
manufacturing of a
new car model

Healthcare: AI will drive healthcare system transformation

Computing health to prevent diseases and improve quality of life



Health perception	Diagnosis and treatment	Medical technology and intervention	Healthcare system and infrastructure
Disease-centered approaches → Health lifecycle management <i>80% of chronic diseases will be preventable.</i>	Symptom-based and one-size-fits-all treatment approaches → Early detection for precise cures <i>New drug R&D will speed up.</i>	Healthcare focusing on treatment and repair; rehabilitation and patient care remaining human-dependent → Brain-computer interfaces and nanobots becoming mainstream; AI companions entering every home <i>Over 60% of daily medical interventions will take place at home.</i>	Concentrated medical resources and limited universal coverage → City-level intelligent infrastructure for universal access to quality healthcare <i>Ubiquitous healthcare is possible.</i>

Transportation: Seamless, intelligent, and sustainable transportation networks for more convenient and efficient mobility

Seamless mobility experience



- **MaaS:** Passengers can book end-to-end mobility services with one click and enjoy seamless travel experience with zero wait.

Intelligent urban transportation



- **City brain:** AI-powered global scheduling and on-demand self-driving robotaxis will enable efficient, low-carbon, and personalized mobility services.

Mobile third spaces



- **Robotaxis:** They will run autonomously in all scenarios, and their cabins will become mobile third spaces that can be customized for entertainment or shopping.

Intelligent connectivity



Intelligent transportation



Intelligent driving



6G networks: Connecting tens of millions of terminals for intelligent IoT

AI and quantum computing: Optimizing and predicting global traffic flows in real time

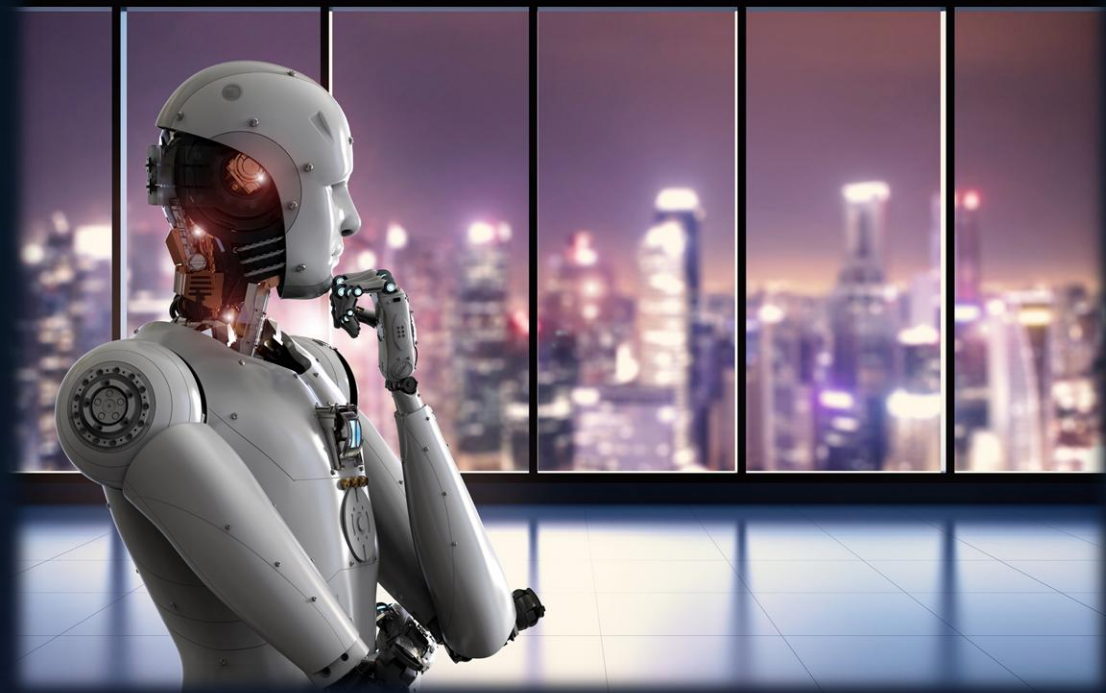
Urban digital twins: Simulating and rehearsing optimal scheduling solutions in the virtual world

ICT infrastructure

100 Gbit/s peak speeds: Supporting lag-free in-vehicle UHD conferencing and VR entertainment

< 0.5 ms latency: Ensuring collaborative V2X risk avoidance for enhanced safety

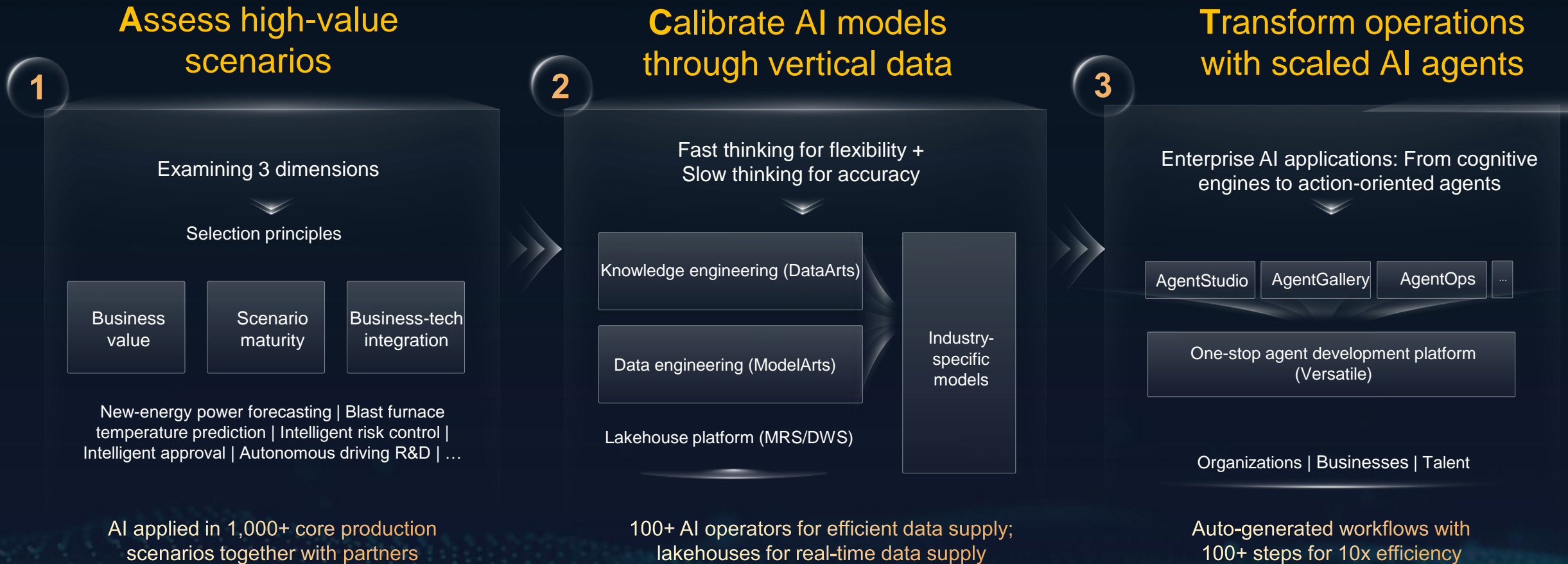
100x increase in AI computing power: Enabling vehicles to make decisions like humans in complex situations



Part 1: Trends of industrial intelligence

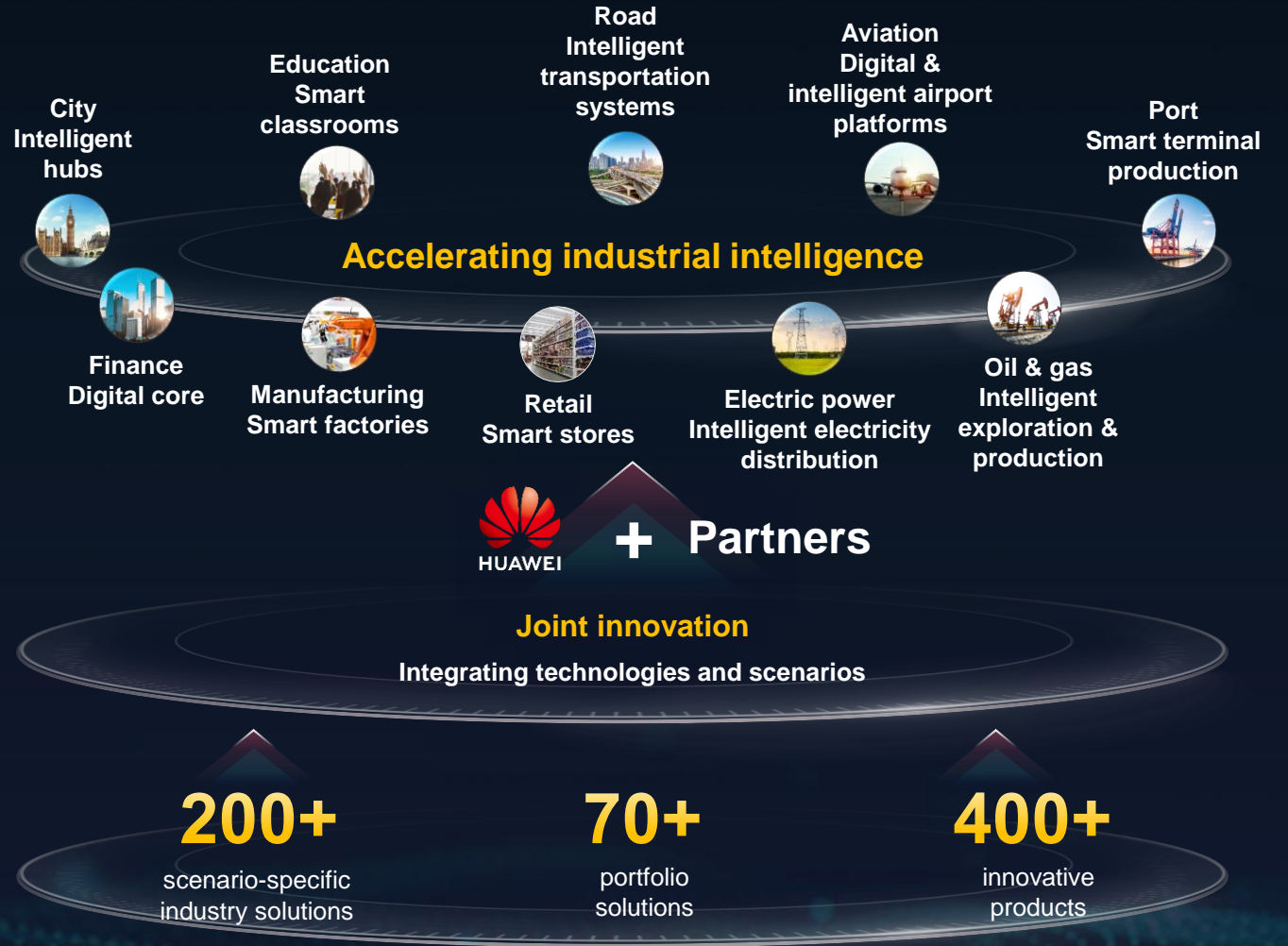
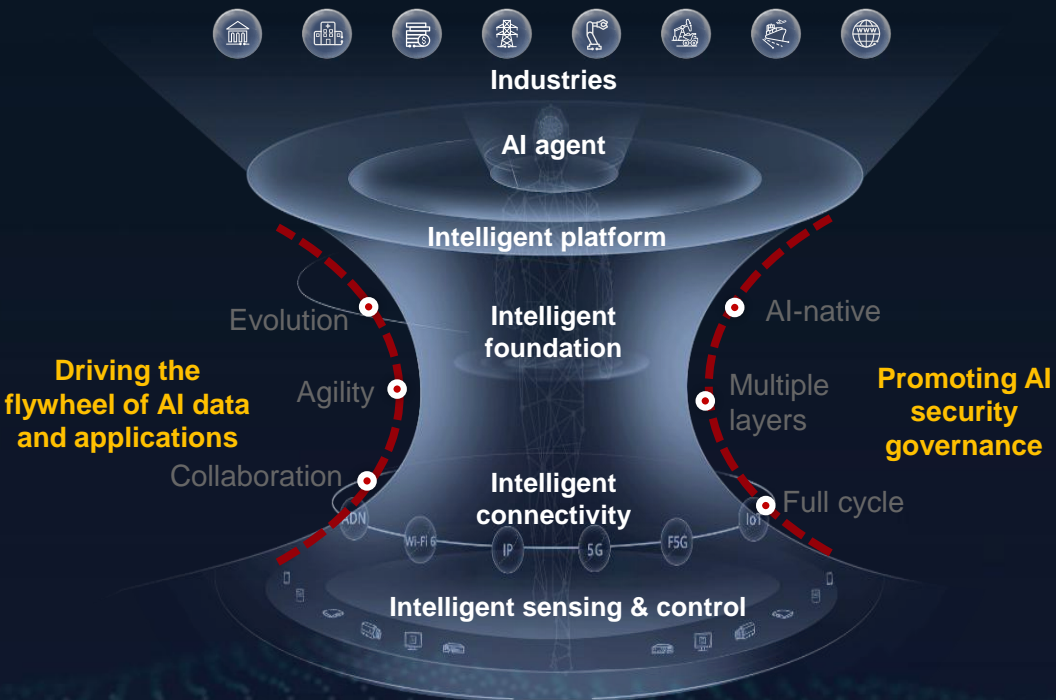
Part 2: Practices and outlook of industrial intelligence

Three-step "ACT" pathway: Breaking new ground to industrial intelligence



Huawei and its partners dive into customers' high-value scenarios to advance intelligence across industries

Reference architecture for industrial intelligence



Huawei collaborates with leading financial institutions to build a new enterprise-grade AI architecture for financial service transformation

An agentic architecture that adapts to business needs and supports business from end to end

E2E intelligence

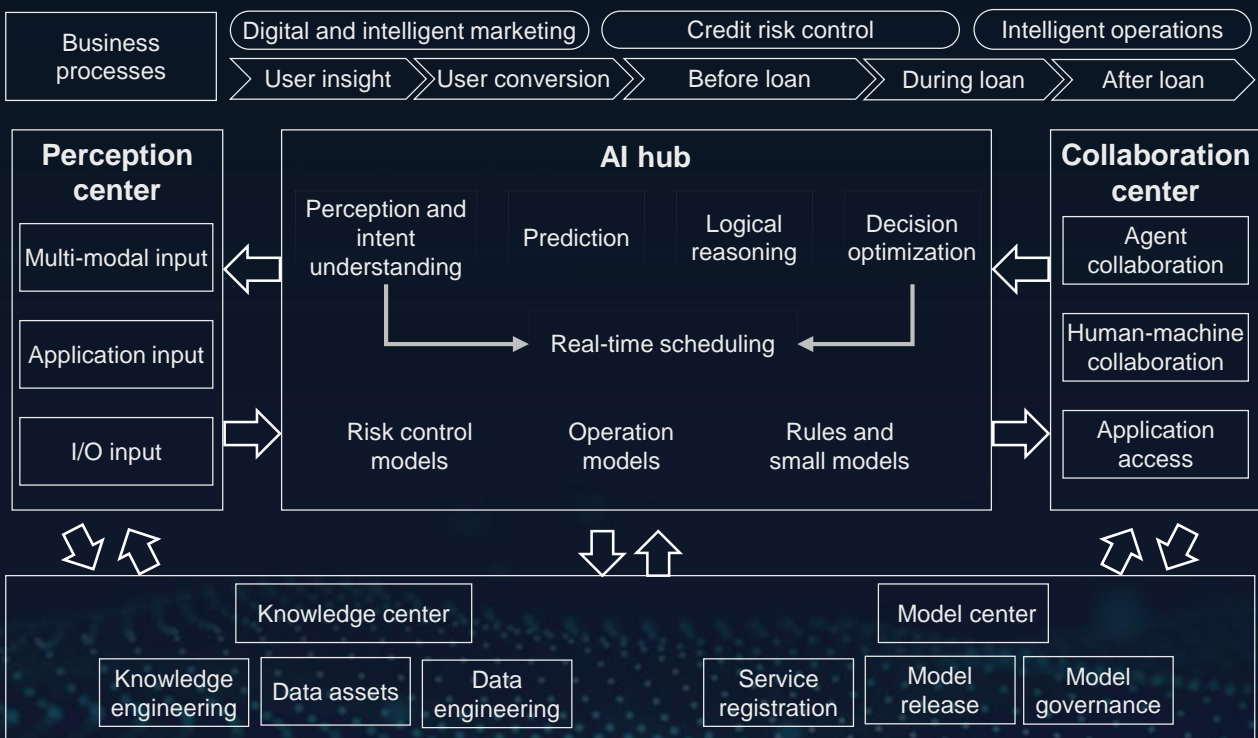
Business intelligence flywheel

Large-scale engineering implementation

Considerable achievements made together with finance customers and partners worldwide

Supporting intelligent decision making

Enabling business transformation with AI



China: A data middle-end architecture that supports real-time marketing



Malaysia: 50 ms decision making for fraud prevention

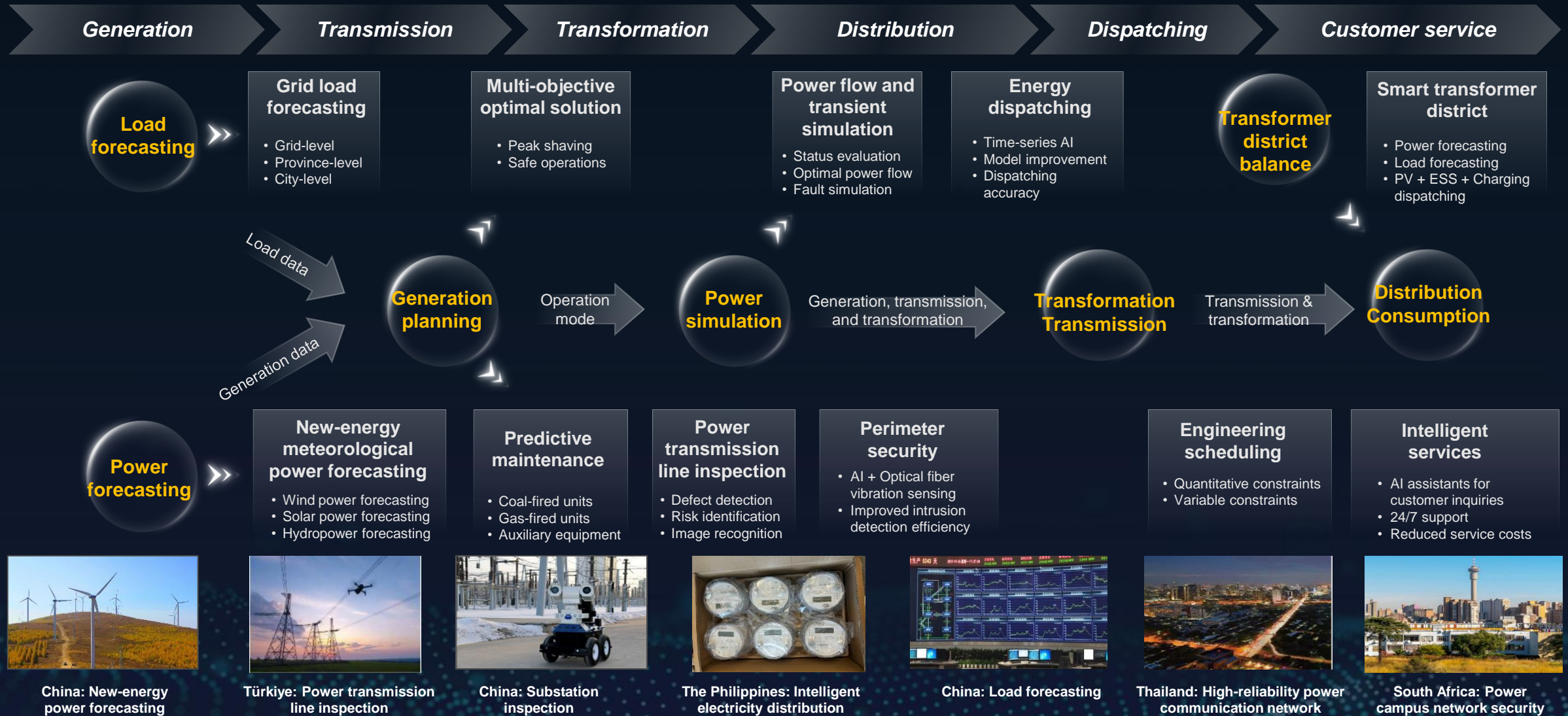


China: 1,000+ agents that reshape business models from end to end



Saudi Arabia: An AI assistant that completes the review of a credit card application within 20 seconds

Huawei and its customers create new power systems, with AI creating key value in all stages of electricity



China: New-energy power forecasting



Türkiye: Power transmission line inspection



China: Substation inspection



The Philippines: Intelligent electricity distribution



China: Load forecasting



Thailand: High-reliability power communication network



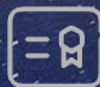
South Africa: Power campus network security

Industry-wide open collaboration for shared success

Embracing industrial intelligence and building a harmonious and healthy global AI ecosystem



**Reshaping industries
with AI**
Boosting enterprise productivity



Advancing AI Intelligence
Providing a new option
for the world



**Strengthening AI
governance and inclusion**
Promoting sustainable
development of AI

Thank you.

Bring digital to every person, home, and organization for a fully connected, intelligent world.

**Copyright©2026 Huawei Technologies Co., Ltd.
All Rights Reserved.**

The information in this document may contain predictive statements including, without limitation, statements regarding the future financial and operating results, future product portfolio, new technology, etc. There are a number of factors that could cause actual results and developments to differ materially from those expressed or implied in the predictive statements. Therefore, such information is provided for reference purpose only and constitutes neither an offer nor an acceptance. Huawei may change the information at any time without notice.

